

Office for Economy

kantonschwyz 



Welcome to
Canton Schwyz

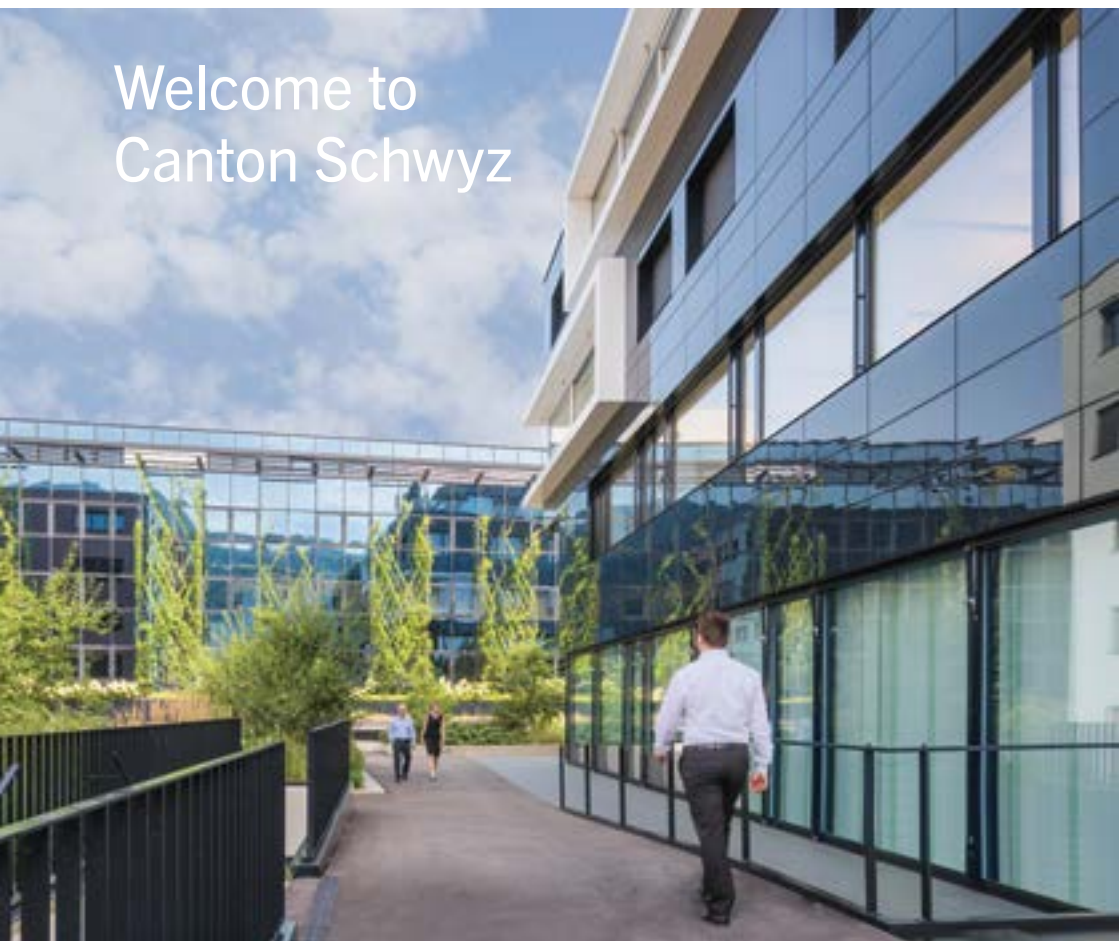


Table of contents

Foreword	4
My Switzerland	8
My Canton Schwyz	12
Business environment	13
Focus industries	13
Starting a business	16
Taxes	20
Legal entities	20
Individuals	25
Labour market	30
Training	31
Quality of life	31
Personal consultation	34

Grüezi

Are you thinking about moving your company to Switzerland or setting up a subsidiary here? If so, why not make Canton Schwyz your chosen place to live and work? A cordial welcome to you! Schwyz is a microcosm of Switzerland itself. Not only are the names and coat of arms very similar – the parallels between them are more far-reaching. Just as Switzerland is independent and internationally well-connected as a country, Canton Schwyz has proven itself an autonomous industrial base resilient to economic ups and downs, and offers the additional benefit of wide-ranging co-operations both within Switzerland and abroad. The Canton's consistent top ratings speak for themselves. Schwyz experiences an era of growth – a pleasing situation which however requires our unwavering commitment to sustainable development. Therefore, the Canton's policy is one of sustained and sustainable development of our region as a wonderful place to live in and an interesting place to set up business. More and more companies take an interest in our canton, which minds its resources and fosters the qualities it has to offer. We invite you to discover the benefits of Schwyz for yourself.



Petra Steimen-Rickenbacher
Head of the Department for Economic Affairs





Zürich

3 Ch... len

8 Gotthard
Einsiedeln

Schindellegi

Roggenacker

Gemeindehaus Dorf

Gem.haus Schloss

Schlossturm 

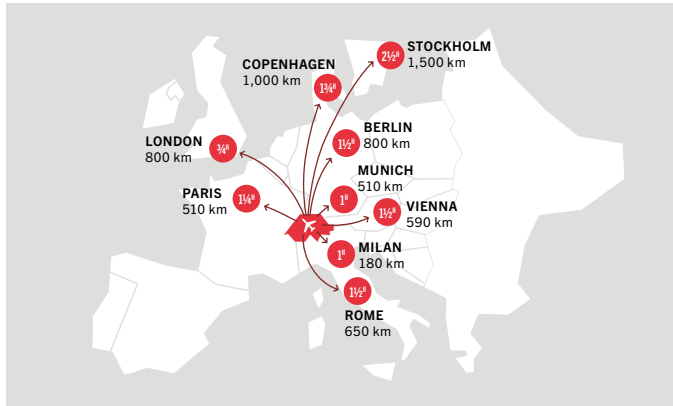
Seedamm - Center

Alpamare
KulturZentrum

My Switzerland

Switzerland finds itself in a privileged position: It is part of Central Europe and the main European cities are within easy reach, while three out of the four largest European economies are neighbouring countries.

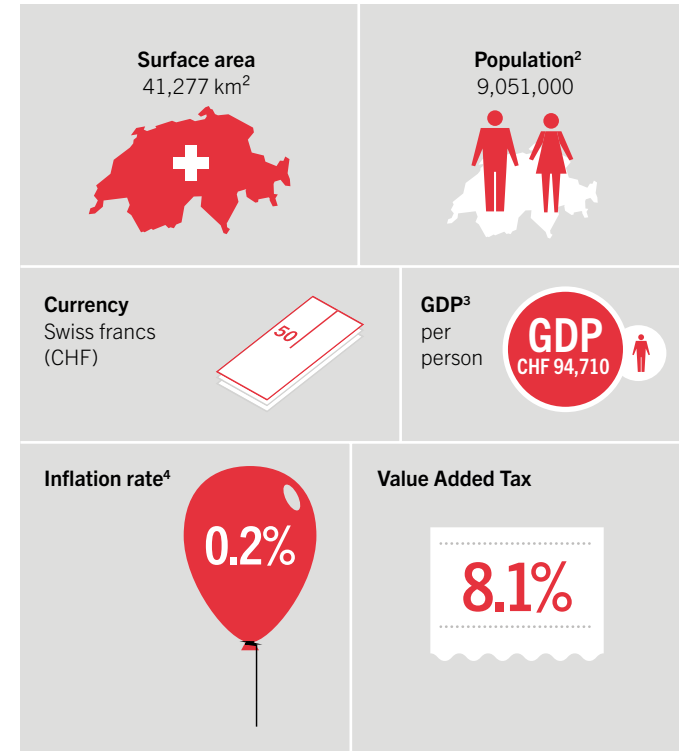
¹ Sources: Liberales Institut, 2023
Global Competitiveness Report 2023
Global Innovation Index 2023



Switzerland is a small country of international standing. Economically speaking, it is Europe's most liberal country, as well as being one of the most competitive and innovative nations in the world.¹ It is divided into a number of cantons with far-reaching decision-making powers. There is a high level of political stability even though the country has several languages and cultures within a relatively small area. There are four national languages in Switzerland: German, French, Italian and Romansh. English is also very widespread. Switzerland has an effective legal system, a powerful currency with a low rate of inflation, comprehensive protection of intellectual property and liberal employment laws – qualities which are especially important when it comes to pursuing business activity.

To be sure of a life of prosperity, security and good health, you would have had to be born in Switzerland in the year 2024. This was the conclusion arrived at by the EIU research unit of the British magazine The Economist: Switzerland is rated number one in the “Where-to-be-born Index”.

Switzerland in figures



² Source: Swiss Federal Statistics Office, 2024

³ Source: Swiss Federal Statistics Office, 2024

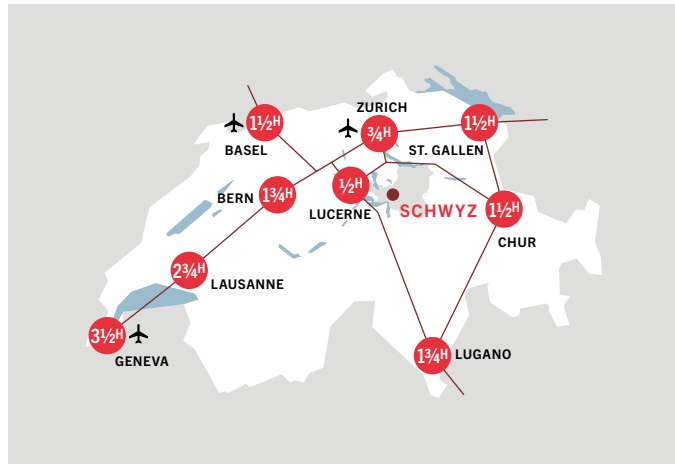
⁴ Source: Swiss Federal Statistics Office, 2025



My Canton Schwyz

Canton Schwyz lies in the heart of Switzerland. In addition to its central location, Schwyz is also one of the country's founding cantons and gave the entire nation its name.

Distances here are short. Zurich International Airport is 45 minutes by car from the cantonal capital, Schwyz. In terms of road and rail transportation, the canton is ideally situated on north-south and east-west links.

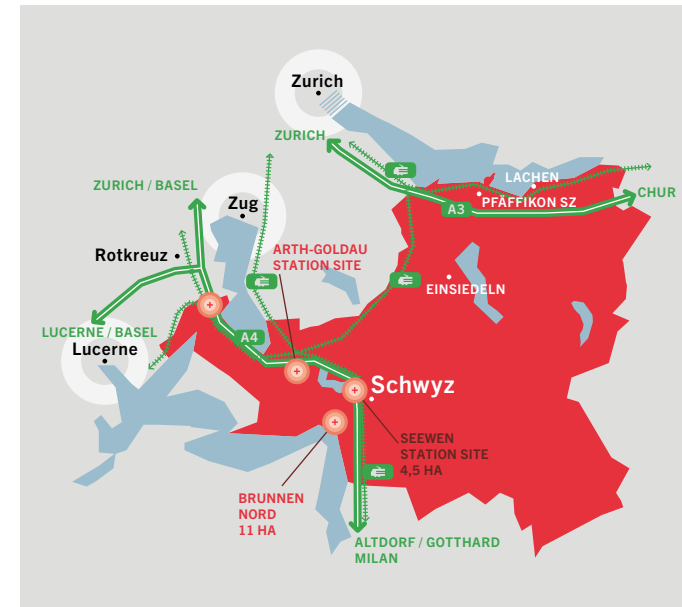


People who live and work in Canton Schwyz are in a heterogeneous environment. Modern development zones alternate with pristine landscapes, imposing mountains and deep blue lakes. These form the backdrop to an economically successful yet authentic region steeped in tradition. The canton also boasts an impressive credit rating: Canton Schwyz is debt-free and has a strong equity position.

Business environment

Schwyz borders on the conurbation areas of Zurich, Zug and Lucerne and forms part of the Greater Zurich Area. GDP growth in the canton is above the Swiss average and productivity is remarkably high.

The canton's economic and living areas have continued to grow more popular. This is reflected in the steadily increasing number of domiciled companies and a growing population. This growth is underpinned by two key factors: direct access to cutting-edge technologies through the CSEM technology and innovation centre, which is based in Schwyz; and the economic and development zones shown below, which still have ample space and land reserves.



For further information on development areas in Canton Schwyz, see www.schwyz-economy.ch



Focus industries

Canton Schwyz has a diverse corporate landscape. As well as being a hub for life sciences, specialised financial services, blockchain/artificial intelligence (AI), additive manufacturing and cleantech, it is also an attractive location for international company headquarters. The focus on specific industries is reflected in relevant services and clusters.

For further information on focus industries and clusters, see www.schwyz-economy.ch





**These companies have opted
for Canton Schwyz**



Estée Lauder AG

Sector: Life science
Function: Supply chain management, production and sales
Site: Lachen



Kühne + Nagel International AG

Sector: Logistics
Function: Headquarters
Site: Schindellegi



LGT Capital Partners AG

Sector: Finance
Function: Headquarters, product development, marketing and sales
Site: Pfäffikon SZ



Man Investments AG

Sector: Finance
Function: Product development, marketing and sales
Site: Pfäffikon SZ



Max Felchlin AG

Sector: Food
Function: Headquarters, production, marketing and sales
Site: Schwyz



Octapharma AG

Sector: Life science
Function: Headquarters, research, marketing and sales
Site: Lachen



Proman AG

Sector: Industrial plant engineering
Function: Headquarters
Site: Wollerau



Victorinox AG

Sector: Knife manufacturer
Function: Headquarters, production, marketing and sales
Site: Ibach

Starting a business

For further information on starting a business, see www.schwyz-economy.ch



Starting a business in Switzerland is straightforward. Essentially, anyone can operate a company. Certain professions require a special permit. Since the canton is a strong financial centre, entrepreneurs have easier access to investors.





Taxes

⁵ Source: BAK Taxation Index 2025

⁶ Minimum tax is equal to capital tax

⁷ Source: BAK Taxation Index 2025

Canton Schwyz has one of the lowest tax burdens⁵ in Switzerland and occupies a leading position in Europe as a whole. Its fiscal policy is sustainable and far-sighted. This makes it an attractive location for both legal entities and individuals.

Legal entities

As regards corporate income tax in Canton Schwyz, legal entities are subject to a minimum tax⁶ based on the company's equity; this tax is charged as a minimum amount. If the corporate income tax turns out to be higher than the minimum tax, the latter is not payable. The level of these two taxes is based on the applicable municipal tax rate. In several locations in Canton Schwyz, the effective tax burden for companies is more attractive than in many well-known places such as Zug, Zurich, Dublin, London, New York and Singapore.⁷ The only federal tax is corporate income tax.

Corporate income tax

The following figures apply to corporations (companies limited by shares, limited liability companies) and cooperatives. They show the tax burden on taxable corporate income in the form of cantonal, district, municipal and church tax (not including federal tax and minimum tax). Special tax-related factors (participation exemption, intercantonal tax allocation, additional deductions, etc.) are not accounted for in this calculation.

Profit before taxes	Wollerau	Freienbach Pfäffikon SZ	Lachen	Küssnacht	Einsiedeln	Schwyz
100,000	4,085	4,093	5,007	5,317	5,847	5,933
250,000	10,213	10,239	12,520	13,299	14,628	14,829
1,000,000	40,854	40,972	50,091	53,210	58,520	59,321
5,000,000	204,270	204,854	250,478	266,049	292,607	296,635
10,000,000	408,541	409,713	500,956	532,104	585,214	593,269

(STATUS 2026, AMOUNTS IN CHF)

The following figures are based on the same scenario as above, including federal tax.

Profit before taxes	Wollerau	Freienbach Pfäffikon SZ	Lachen	Küssnacht	Einsiedeln	Schwyz
100,000	11,599	11,598	12,444	12,729	13,217	13,302
250,000	28,998	29,016	31,118	31,838	33,065	33,248
1,000,000	115,994	116,103	124,500	127,380	132,274	133,008
5,000,000	579,970	580,503	622,557	636,904	661,388	665,101
10,000,000	1,159,941	1,161,020	1,245,114	1,273,822	1,322,776	1,330,202

(STATUS 2026, AMOUNTS IN CHF)

Tax on capital⁸

The following figures show the tax burden on taxable capital in the form of cantonal, district, municipal and church tax. There is no federal tax on capital.

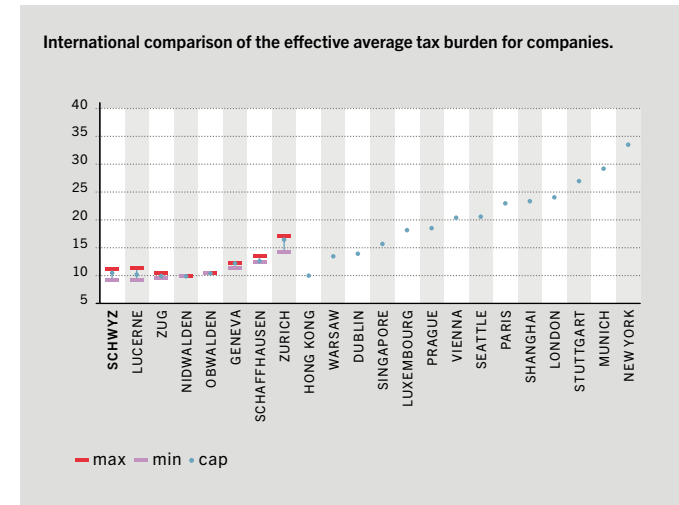
⁸ Equal to minimum tax

Capital	Wollerau	Freienbach Pfäffikon SZ	Lachen	Küssnacht	Einsiedeln	Schwyz
100,000	237	238	293	313	346	351
250,000	237	238	293	313	346	351
1,000,000	237	238	293	313	346	351
5,000,000	355	356	440	469	519	526
10,000,000	711	713	880	938	1,038	1,053

(STATUS 2026, AMOUNTS IN CHF)

Only the higher of the two amounts is payable: corporate income tax or minimum tax.

International comparison



(SOURCE: BAK TAXATION INDEX 2025, FIGURES IN PER CENT)



Tax relief for entrepreneurial innovations

Canton Schwyz supports entrepreneurial innovations and offers complete use of the acceptable margin for tax relief.

For further information on taxation of legal entities in Canton Schwyz including a tax calculator, see www.schwyz-economy.ch



Research and development: Additional deduction of 50 per cent for nationally effected research and development.

Patent box: Relief of 90 per cent on net profit from registered patents and comparable rights and claims.

Step-up: When moving from abroad, hidden reserves including internally generated added value (goodwill) can be realised at the start of liability for taxation. Hidden reserves and goodwill must then be depreciated in accordance with tax regulations.

Limitation of reliefs: The combined tax relief from additional deductions for research and development as well as patent box may not exceed 70 per cent.



Individuals

For individuals, the tax burden is remarkably low in Canton Schwyz. The rates of income and wealth tax as well as tax on lump-sum pension payments plans are among the most attractive in the world. What is more, there is no gift or inheritance tax.

Tax on income

For individuals, the income tax rate runs on a progressive scale up to CHF 230,400, for jointly taxable spouses up to CHF 437,800. There is an additional cantonal tax scale for individuals up to CHF 385,900 and for jointly taxable spouses up to CHF 733,300.

The following figures apply to a married couple with two children. They show the tax burden on taxable income in the form of cantonal, district and municipal tax (not including church tax, federal tax and wealth tax).

Income	Wollerau	Freienbach Pfäffikon SZ	Lachen	Küssnacht	Einsiedeln	Schwyz
100,000	4,720	4,720	6,374	6,917	7,595	7,731
250,000	14,825	14,825	20,022	21,725	23,855	24,281
500,000	32,056	32,056	43,188	46,838	51,400	52,313
1,000,000	78,360	78,360	100,625	107,924	117,049	118,874
2,000,000	156,720	156,720	201,250	215,849	234,099	237,749

(STATUS 2026, AMOUNTS IN CHF)

The following figures are based on the same scenario as above, including federal tax.

Income	Wollerau	Freienbach Pfäffikon SZ	Lachen	Küssnacht	Einsiedeln	Schwyz
100,000	6,010	6,010	7,664	8,207	8,885	9,021
250,000	32,686	32,686	37,883	39,586	41,716	42,142
500,000	82,417	82,417	93,549	97,199	101,761	102,674
1,000,000	192,834	192,834	215,099	222,398	231,523	233,348
2,000,000	386,194	386,194	430,724	445,323	463,573	467,223

(STATUS 2026, AMOUNTS IN CHF)

Tax on dividends

In order to reduce the double tax burden on dividends, Canton Schwyz has a system of privileged dividend taxation. According to this, income from dividends is reduced by 50 per cent before being included in the tax assessment. For example, with a dividend income of CHF 10,000, only CHF 5,000 is counted as taxable income. As far as direct federal tax is concerned, taxation is also reduced by 30 per cent. A share of at least 10 per cent of a company's capital is required.

The following figures apply to a married couple with two children. They show the tax burden on taxable income in the form of federal, cantonal, district and municipal tax (not including church tax and wealth tax).

Dividend	Wollerau	Freienbach Pfäffikon SZ	Lachen	Küssnacht	Einsiedeln	Schwyz
100,000	1,954	1,954	2,594	2,803	3,065	3,118
250,000	14,451	14,451	16,674	17,402	18,313	18,495
500,000	45,686	45,686	50,883	52,586	54,716	55,142
1,000,000	108,417	108,417	119,549	123,199	127,761	128,674
2,000,000	238,834	238,834	261,099	268,398	277,523	279,348

(STATUS 2026, AMOUNTS IN CHF)

Wealth tax

The rate of wealth tax in Canton Schwyz is proportional. There is no federal wealth tax.

The following figures apply to a married couple with two children. They show the tax burden on taxable assets in the form of cantonal, district and municipal tax (not including church tax).

Assets	Wollerau	Freienbach Pfäffikon SZ	Lachen	Küssnacht	Einsiedeln	Schwyz
500,000	522	522	705	765	840	855
2,500,000	2,610	2,610	3,525	3,825	4,200	4,275
5,000,000	5,220	5,220	7,050	7,650	8,400	8,550
10,000,000	10,440	10,440	14,100	15,300	16,800	17,100
50,000,000	52,200	52,200	70,500	76,500	84,000	85,500

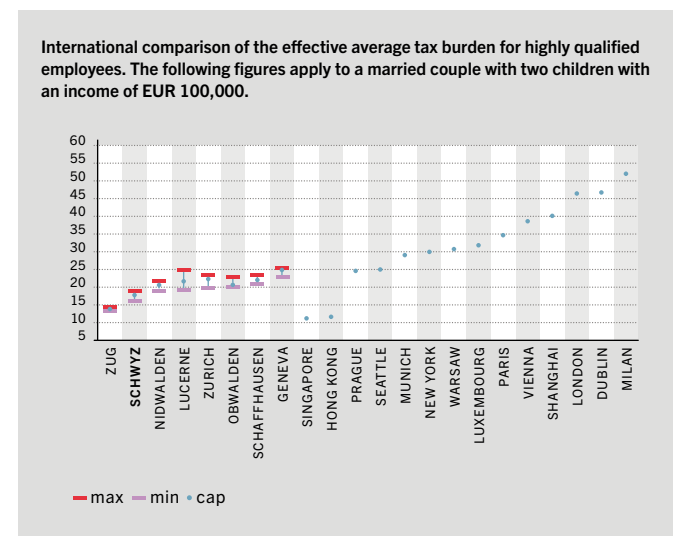
(STATUS 2026, AMOUNTS IN CHF)

Intercantonal comparison

On average, a family in Schwyz works only until January 10 to pay their direct taxes. This gives Schwyz an excellent rating as compared to other Swiss cantons. This calculation applies to a married couple with two children and a gross income of CHF 100,000 (single earner marriage).⁹

⁹ Source: Federal Tax Administration, 2023

International comparison



(SOURCE: BAK TAXATION INDEX 2025, FIGURES IN PER CENT)

Lump-sum taxation for individuals

Taking up residence in Schwyz, without Swiss citizenship and without pursuing a gainful employment, one can, in certain cases, be taxed based on a lump-sum taxation instead of paying regular income and wealth tax. The same applies to individuals who have been out of the country for ten years or more. Private living costs are taken as the assessment basis for lump-sum taxation.

For further information on taxation of individuals in Canton Schwyz including a tax calculator, see www.schwyz-economy.ch





Labour market

¹⁰ Source: Swiss State Secretariat for Economic Affairs, annual averages 2025

The labour market in Switzerland is characterised by a high level of social stability, liberal employment laws and a motivated and a highly qualified workforce. Swiss employees are a secure asset for every company. The problem of unemployment is virtually unknown in this country: the rate in Canton Schwyz is 1.2 per cent, in Switzerland as a whole it is 2.8 per cent.¹⁰

For further information on applying for work and residence permits in Switzerland, see www.schwyz-economy.ch



Work and residence permits for nationals of the European Union (EU) and the European Free Trade Association (EFTA) are issued quickly and unbureaucratically, provided requirements are met. Nationals from “third countries” – countries which do not belong to the EU or EFTA – have to meet additional criteria to obtain a work and residence permit for Switzerland.

While the level of pay in Switzerland is comparatively high, this has to be seen in relation to the innovative strength of companies and the excellent productivity of employees. Taking into account the working hours, high employee loyalty rate, good work morale and moderate non-wage labour costs, the cost-benefit ratio for employers is excellent. Since Switzerland has an efficient social insurance system, social security contributions here are low by international comparison.

Training

Switzerland has an excellent educational system, which is widely regarded as ranking among the best in the world. Canton Schwyz and its surrounding areas offer state-funded and private schools at all levels – from primary education to university. These include international schools. Switzerland’s academic institutions train their students to be excellent professionals. In fact, Switzerland may boast to have the largest number of Nobel Prize winning scientists¹¹ in proportion to its population.

Canton Schwyz is committed to the transfer of knowledge and technology. Resident companies may participate in a knowledge network, which includes specialised institutions such as technical colleges, universities, universities of applied sciences and technology centres. Canton Schwyz also has partnerships and works closely with the local CSEM technology and innovation centre and with Innovationstransfer Zentralschweiz (Innovation Transfer Central Switzerland, ITZ).

Quality of life

Becoming a resident in Canton Schwyz, one can take advantage of a living environment with a lot to offer. A wide range of sports, leisure and cultural activities is available. The countryside is pristine featuring beautiful villages and small towns. Modern and traditional facets of life exist comfortably side by side in this homely location. Schwyz combines dynamism and tranquillity, high-tech industry, agriculture, innovation, lakes and mountains.

In its very diversity the region is distinctive and unique, which is part of the region’s charm and success. People, who come here, live snug and safe lives. The crime rate is extremely low. Residents, among them prominent figures from the economy, culture, sports and entertainment, appreciate the region for all these features.

¹¹ Source: IMD, World Competitiveness Yearbook 2024

For details of knowledge and technology transfer and innovation promotion, see www.schwyz-economy.ch



For details of all outdoor, leisure and cultural highlights of Canton Schwyz, see www.schwyz-economy.ch





Personal consultation

For details of advisory services provided by the Economic Development Office of Canton Schwyz, see www.schwyz-economy.ch



The consultants of the Economic Development Office of Canton Schwyz are more than willing to offer their expertise and valuable contacts to interested investors, both from Switzerland and abroad. If you are

- + considering Schwyz as a new base and have questions about starting a business,

- + interested in finding out more about the tax regime,

- + looking for access to universities or research institutions,

- + seeking support in recruiting manpower,

- + in need of work and residence permits for yourself or your employees,

- + in search of a suitable property,

we will be glad to advise. We are also able to arrange additional services such as innovation promotion coaches or support programmes for start-ups. We hope to hear from you and look forward to a successful collaboration.

Office for Economy Canton Schwyz
Economic Development

Tel. +41 (0)41 819 16 34
awi@sz.ch
www.schwyz-economy.ch

Publishing notes

Publisher: Office for Economy Canton Schwyz, Bahnhofstrasse 15, 6430 Schwyz
Concept, editor: Office for Economy Canton Schwyz **Design:** Büro Nord GmbH, Küssnacht am Rigi **Photography:** Zürrer Fotografie, Buchrain
Printer: Bruhin Spühler AG, Freienbach **Published:** June 2026

Office for Economy Canton Schwyz

Bahnhofstrasse 15
P.O. Box 1187
CH-6431 Schwyz

Tel. +41 (0)41 819 16 34
awi@sz.ch
www.schwyz-economy.ch

